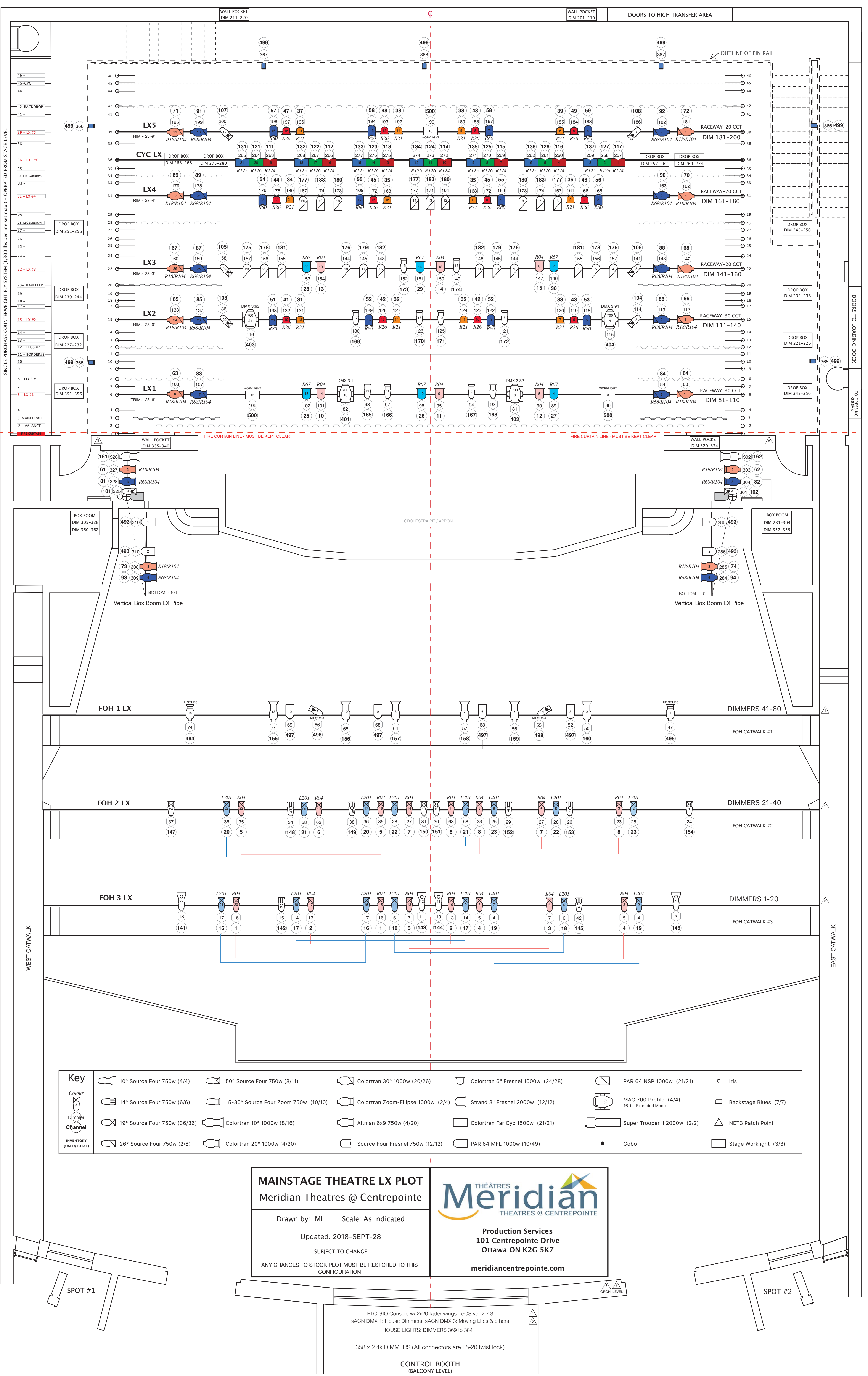


FT

40  
38  
36  
34  
32  
30  
28  
26  
24  
22  
20  
18  
16  
14  
12  
10  
8  
6  
4  
2  
0  
2  
4  
6  
8  
10  
12  
14  
16  
18  
20  
22  
24  
26  
28  
30  
32  
34  
36  
38  
40  
42  
44  
46  
48  
50  
52  
54  
56  
58  
60  
62  
64  
66  
68  
70  
72  
74  
76  
78  
80  
82  
84  
86  
88  
90



Colour	Dimmer	Channel	Inventory (USED/TOTAL)
10° Source Four 750w (4/4)	14° Source Four 750w (6/6)	19° Source Four 750w (36/36)	26° Source Four 750w (2/8)
50° Source Four 750w (8/11)	15-30° Source Four Zoom 750w (10/10)	Colortran 10° 1000w (8/16)	Colortran 20° 1000w (4/20)
Colortran 30° 1000w (20/26)	Colortran Zoom-Ellipse 1000w (2/4)	Altman 6x9 750w (4/20)	Source Four Fresnel 750w (12/12)
Colortran 6° Fresnel 1000w (24/28)	Strand 8° Fresnel 2000w (12/12)	Colortran Far Cyc 1500w (21/21)	PAR 64 MFL 1000w (10/49)
PAR 64 NSP 1000w (21/21)	MAC 700 Profile (4/4) 16-bit Extended Mode	Super Trooper II 2000w (2/2)	Gobo
Iris	Backstage Blues (7/7)	NET3 Patch Point	Stage Worklight (3/3)

**MAINSTAGE THEATRE LX PLOT**  
Meridian Theatres @ Centrepointe

Drawn by: ML    Scale: As Indicated

Updated: 2018-SEPT-28

SUBJECT TO CHANGE

ANY CHANGES TO STOCK PLOT MUST BE RESTORED TO THIS CONFIGURATION

**Production Services**  
101 Centrepointe Drive  
Ottawa ON K2G 5K7

[meridiancentrepointe.com](http://meridiancentrepointe.com)

ETC GIO Console w/ 2x20 fader wings - eOS ver 2.7.3  
sACN DMX 1: House Dimmers sACN DMX 3: Moving Lites & others  
HOUSE LIGHTS: DIMMERS 369 to 394

358 x 2.4k DIMMERS (All connectors are L5-20 twist lock)

**CONTROL BOOTH**  
(BALCONY LEVEL)

